

PRESENTED BY LA BOITE THEATRE, THE LITTLE RED COMPANY
AND BRISBANE FESTIVAL



RACHEL BURKE'S
FANCY LONG LEGS

SOCIAL STORY

WITH SUPPORT FROM



Where is the show?

I'm going to a performance today at La Boite Roundhouse Theatre.

The theatre is part of the QUT campus.

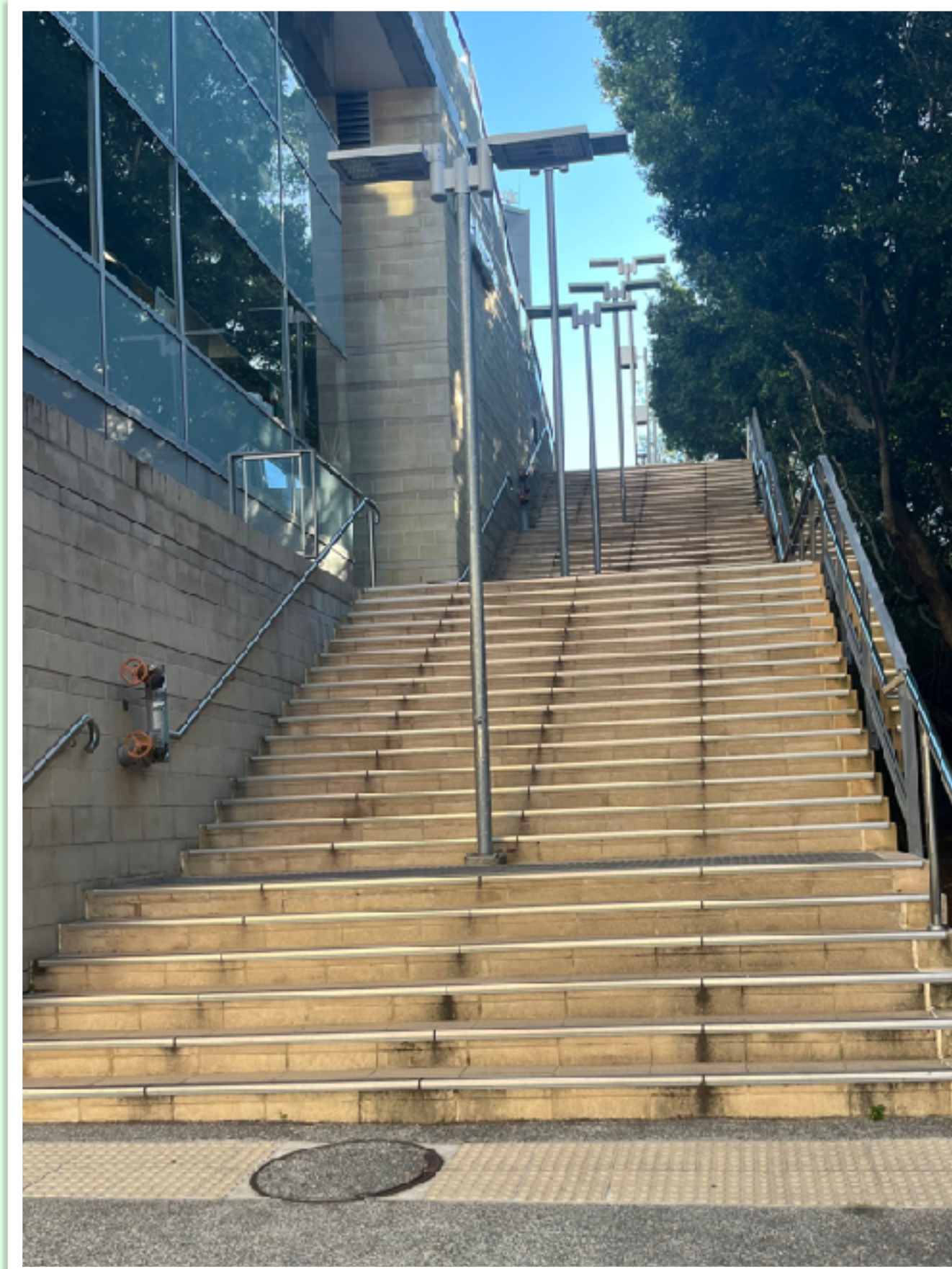
On the outside it's a round brick building. The entrance is through a large courtyard.



How do I get there?

I can get to the theatre in different ways.

If I am in the Kelvin Grove Village, I can take the lift or the stairs all the way to the top. At the top, I will see the path of the courtyard.



How do I get there?

This is the path to the theatre from the top of the lift.



The lift door will open and I will make my way along a small bridge.



I will walk across an open cement area, and along a path to the right of The Loft.

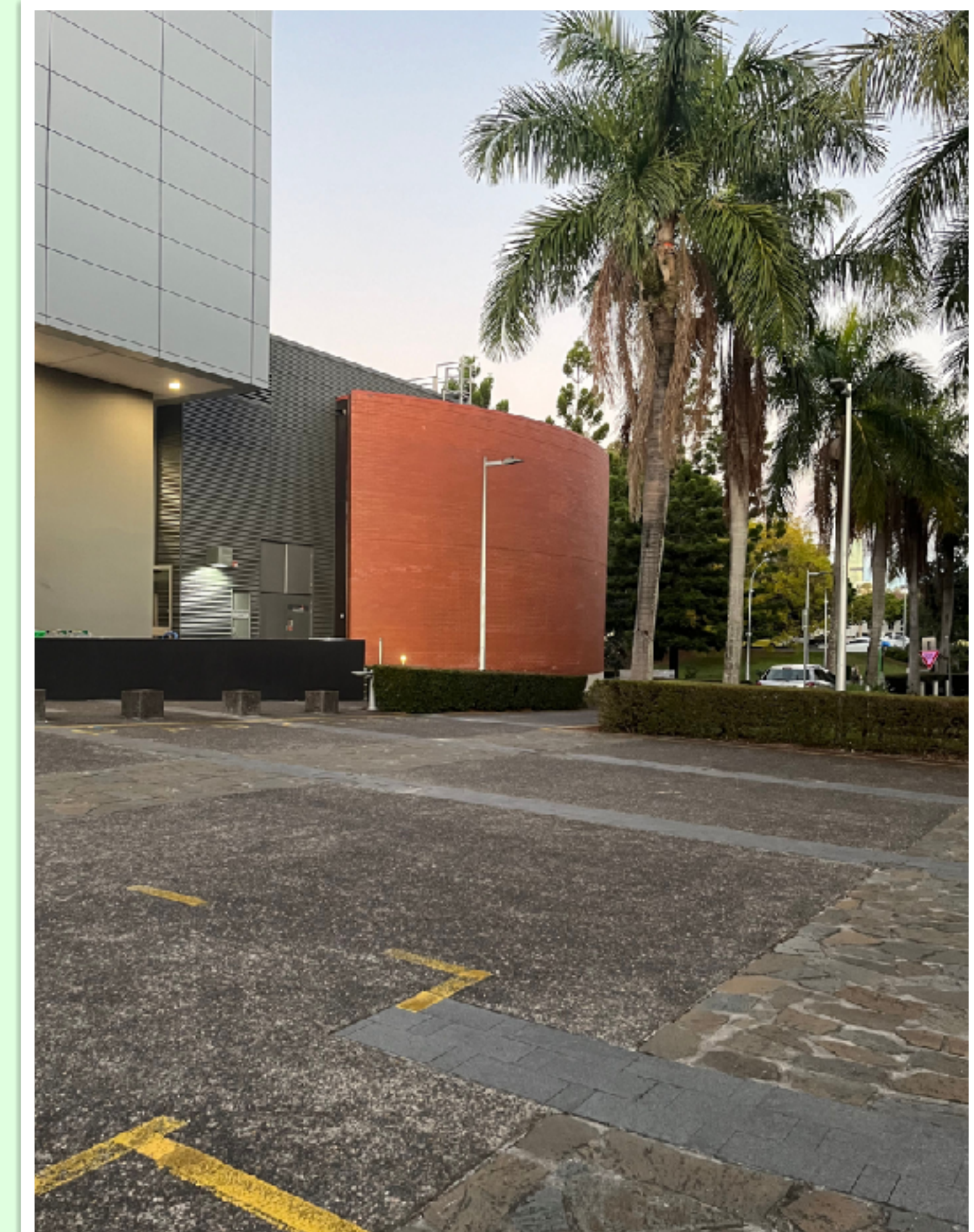


I'll see the theatre on the far side of the courtyard.

How do I get there?

I can get dropped off in a driveway called Gona Parade, right next to the theatre. It is off Musk Avenue.

We can't park here though.



Before the Show

Before the show I can wait in the La Boite foyer, or in the courtyard.

The foyer will have colourful decorations.

I can do arts and craft activities in the foyer if I like.

If I need help I can ask the La Boite staff. They wear black t-shirts



Venue Facilities

If I need to use the bathroom, it's best I do so before the show, so I don't miss anything!

La Boite have bathrooms down a corridor to the right of the path to the theatre.



Break-Out Space

There will be a break-out space in a room near the theatre. I can get there through a door in the foyer.

The room will have dim lights, stress balls, and a screen so I can watch the show.

I can use the room any time I feel overwhelmed.

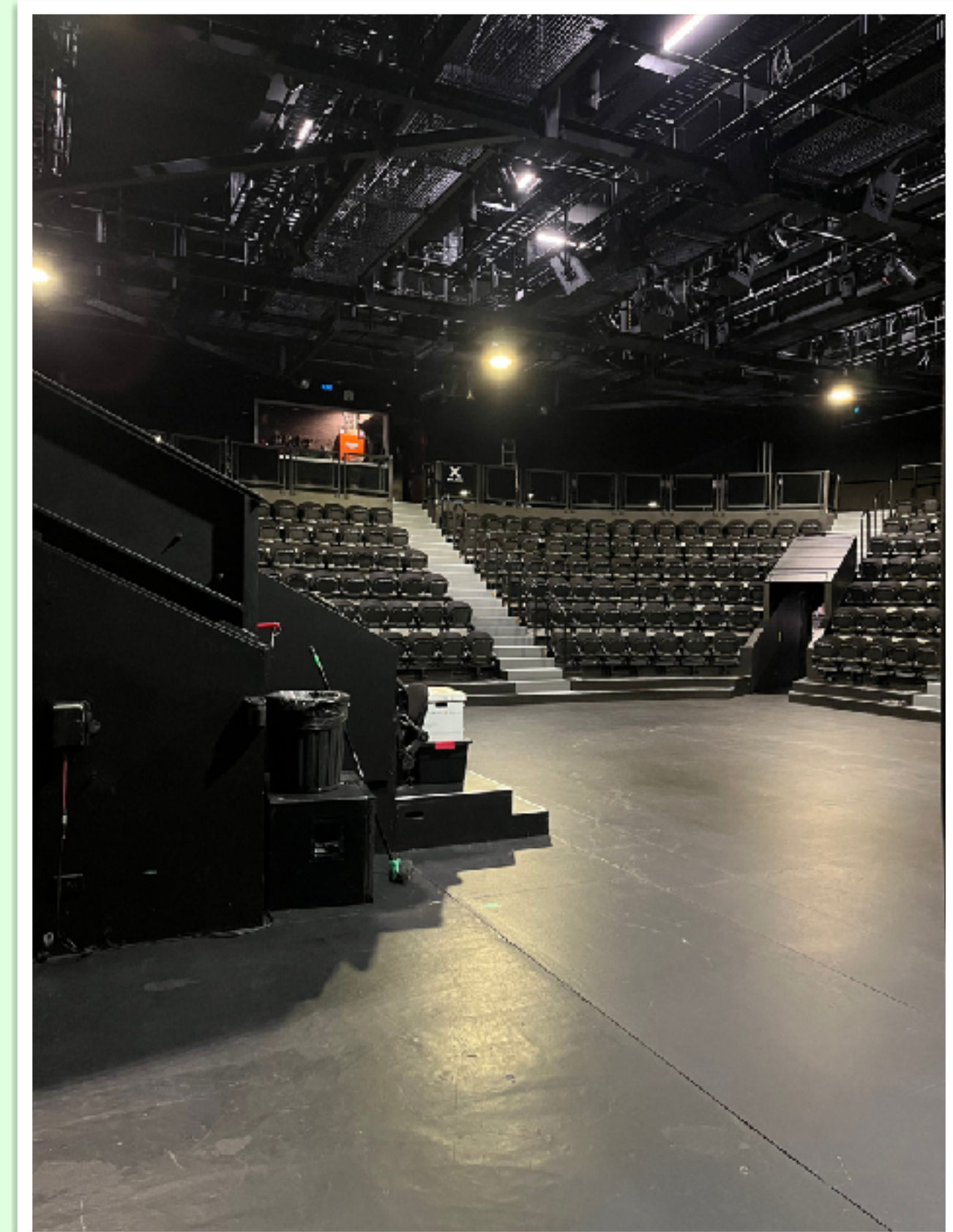


Entering the Theatre

When it's time to go inside there will be an announcement over the speaker.

I'll follow a pathway into the theatre and find my seat, listed on my ticket.

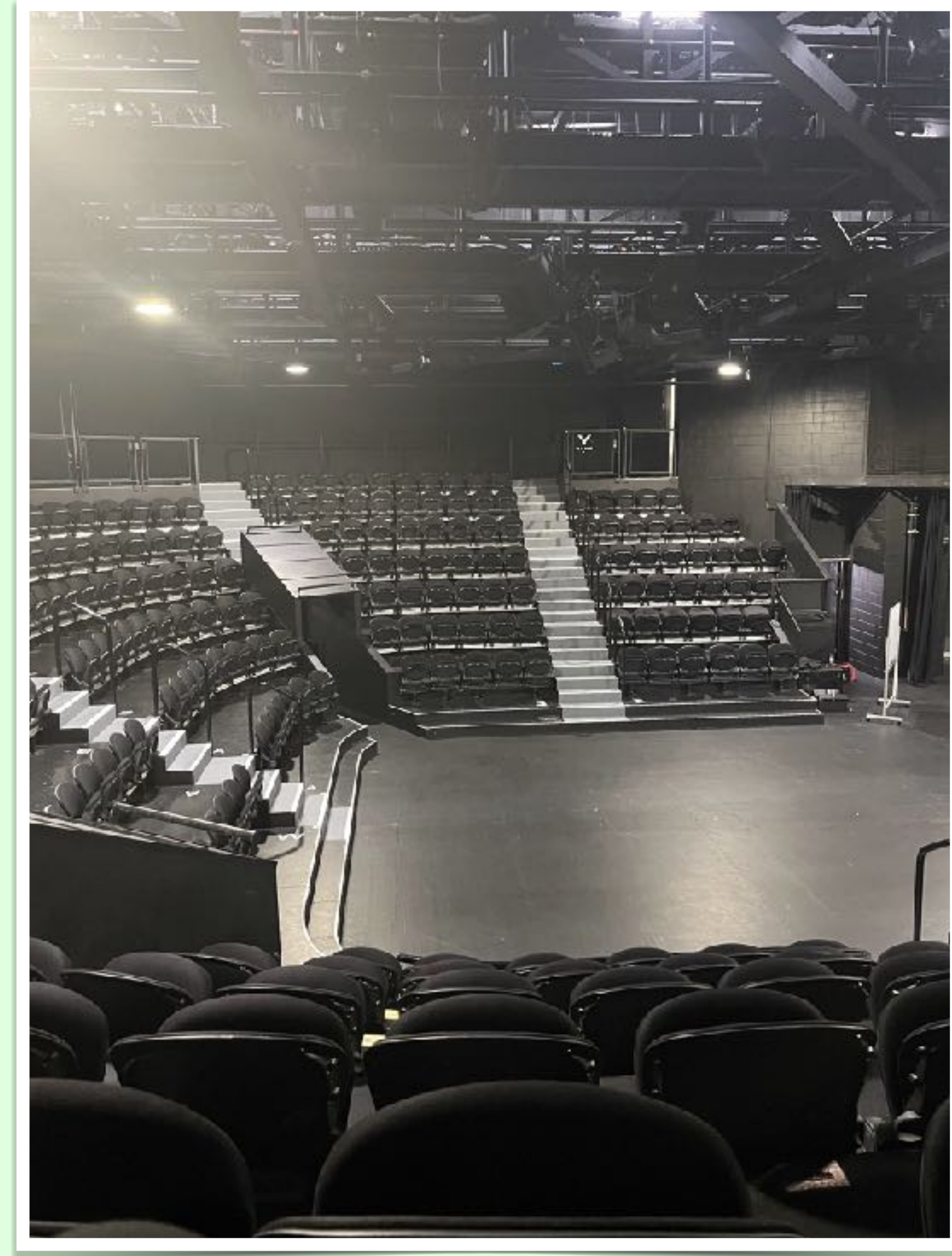
The path will look different to these pictures - more colourful and fabulous ✨



Inside the Theatre

The La Boite Roundhouse Theatre has seats that wrap around the stage.

This is how it looks empty. On the day, there will be a large set with lots of colour on stage.



Audience and Crowd

There might be a big crowd.

I might be sitting next to strangers.

If I need help, I can ask an usher.

I can follow the path to leave the theatre if I need to.



The Start of the Show

The show will happen on the stage. The lights will dim and bright lights will shine onto the stage so we can see the performers clearly.

One of the actors will speak to the audience at the start of the show and give us some important information and help us feel as safe as possible.



The Show

When the show begins I will see 4 actors on stage. They will act and sing. There will be recorded music playing.

The lights in the show will not be as bright as other shows.

There will be a sign that lights up that says “Big Feelings”. This is a warning light. It will light up when a character is sharing big feelings.



The Show

The music will be gentle and there will be no jump scares or loud noises.

Instead of clapping, we will be asked to give “spidey fingers”. This means reaching out to the stage and wiggling my fingers.

I can put on my headphones or take a break in the break-out space if I need to.



Who will be onstage?



This is Mia

She plays Fancy



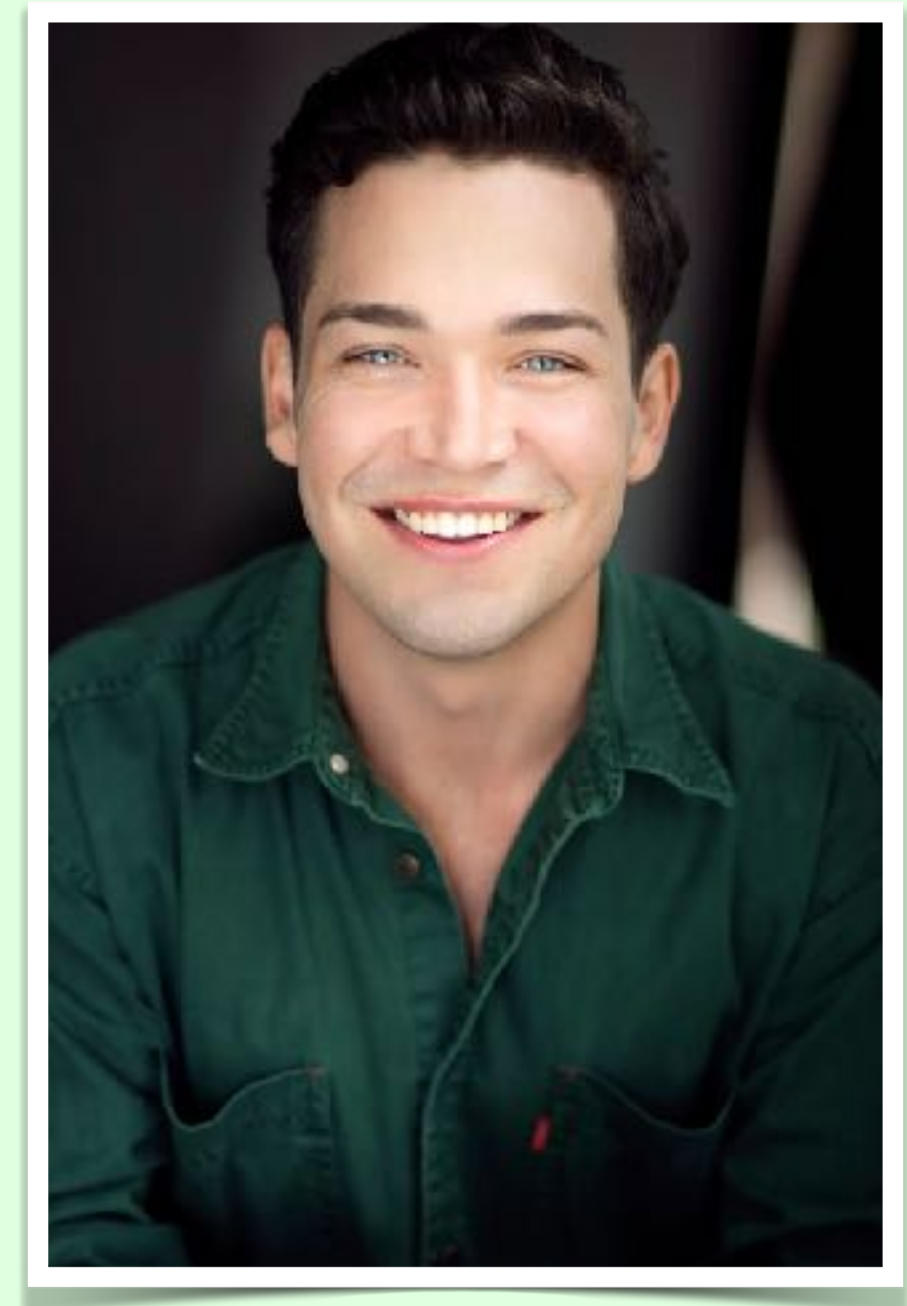
This is Irena

She plays Incy



This is Kate

She plays Busy



This is Tim

He plays Charlotte

Costumes

A costume is an outfit an actor wears to show the character they play. Here are some drawings of the costumes I will see. They will have puffy sleeves and fun hats with spider legs on them.



Fancy's costume



Incy's costume



Busy's costume



Charlotte's costume

What happens when it's over?

Once the show is over, I will follow the path to leave the theatre.

The path will take me to the foyer. In the foyer, I can take part in some scribble art.

There might be lots of people, so it might be slow to get out of the theatre.

